

NAHB The New American Home[®] 2024



TNAH[®]
The New American Home @IBS

PROBUILDER
PROFESSIONAL BUILDER
THE OFFICIAL MEDIA PARTNER OF NAHB

TABLE OF CONTENTS

- 3 A Thank You To Our Suppliers
- 4 TNAH Build Team
- 5 About TNAH Program
- 6 The New American Home 2024
- 8 Outdoor Living
- 10 Interior Design
- 13 Professional Kitchen
- 14 Primary Suite
- 16 Efficient Means & Methods
- 17 Performance
- 19 Technology
- 20 Thank You To Our Sponsors

SHUTTLE BUS INFORMATION

Registered 2024 IBS and KBIS attendees may tour The New American Home (TNAH) during the show hours from 9 a.m. to 5 p.m., Feb. 27-29. Complimentary shuttle buses are provided and will depart every half hour from the Las Vegas Convention Center (LVCC). Shuttle bus tickets are available on a first-come, first-served basis only on the day that you want to take the tour. For the best opportunity of securing tickets, visit the TNAH booth, located in the Central Hall of the LVCC, early on the day you want to take the tour (booth opens at 7:30 a.m.). Shuttle buses will depart every 30 minutes from the front of the Central Hall beginning at 8:30 a.m. until 3p.m.

SHUTTLE BUSES RECOMMENDED, BUT IF YOU DECIDE TO DRIVE THE ADDRESS IS:

21 Sky Arc Ct., Henderson, NV 89012



A THANK YOU TO OUR SUPPLIERS

PLATINUM

- M** Caesarstone
- M** LG Electronics
- M** LG Air Conditioning Technologies
- M** Signature Kitchen Suite

GOLD

- M** Kohler Co.
- M** StoneWorks
- M** Kohler Home Energy
- M** Wellborn Cabinet, Inc.

SILVER

- M** Brown Jordan Outdoor Kitchens
- M** Masonite International Corporation
- M** Clopay Corporation
- M** OmegaFlex, Inc.
- M** DaVinci Custom Fireplaces & Fire Garden
- M** Progress Lighting
- M** HALO by Cooper Lighting Solutions
- M** Schneider Electric
- M** DoorBird
- M** Tamlyn
- M** Fi-Foil Company, Inc.
- VintageView Wine Storage Systems
- M** LiftMaster
- Western Window Systems

LSC CONTRIBUTORS

- M** Broan-Nutone
- M** InSinkErator
- M** Sherwin-Williams
- M** Dal-Tile
- M** Kidde
- M** Simpson Strong-Tie
- M** Gladiator Garage Works
- M** Lutron Electronics
- M** SMEG
- /Whirlpool Corp.
- M** Resideo
- M** VELUX-America, Inc.

PARTICIPATING COMPANIES

- Accurate Millworks
- Environmental Water Systems
- Mechanical Products Nevada
- AeroBarrier
- Euclid Chemical Company
- Rinnai America Corporation
- AutoHot
- Fire Magic Premium Outdoor Grills
- Scena
- Battle Born Specialties, LLC
- Fusion Home Systems - LV
- Schaub
- Bedrock Wireless
- Holcim
- Schluter-Systems
- Complete Solaria
- Home Team Pest Defense
- Summit Automation
- Creative Closets
- Infratech
- Tafisa
- Dakota Shy Wine
- Josh
- Thermory USA
- Emtek
- Knauf Insulation North America

M = Leading Suppliers Council Member

TNAH 2024 BUILD TEAM



Back Row:

Angel Leon-Zapata
Assistant Superintendent

Christopher Coletti
Executive Assistant

Bob Hanbury
TNAR 2024 Chairman

Lee Nave
CAD Manager

Omar Drummond
Interior Design Assistant

Michael Cotter
CAD Designer

Mark Schlachter
Superintendent

Hiram Lowe
CAD Designer

Front Row

Jamahl Gibbons
IBS Show Homes Manager

Tucker Bernard
Executive Director, LSC
/IBS Show Homes

Jennie Marsh
Interior Designer

Nicole Maiers
Assistant Project Manager

Daniel Coletti
Owner

Ted Mahoney
TNAH 2024 Chairman

Tim Unick
Project Manger



Jeff Bankert
VP, Executive Producer
NAHB Media/Structure
Production



Darren DiPatri
Director, Production
NAHB Media
Structure Production



Drew Smith
COO
Two Trails, Inc.
Energy Verifier and Consultant



Chris Perrino
Group Director - Principal
SGC Horizon, LLC



Rich Binsacca
Editor-in-Chief
SGC Horizon LLC



Sean Olin
Director of Sales
SGC Horizon LLC



Judy Brociek
Director of Events
SGC Horizon LLC

ABOUT TNAH 2024

In 2024, The New American Home program introduces an extraordinary concept that seamlessly blends luxury, tranquility, and inspiration into a breathtaking, resort-like experience in Ascaya. This innovative masterpiece, created by Sun West Custom Homes, is designed to be a place of unparalleled beauty, meticulously crafted to evoke a sense of serenity and elegance. The essence of natural wood and stone materials forms the soul of this architectural marvel, enveloping visitors in a harmonious embrace of nature's finest elements.

This state-of-the-art exhibition, energy efficient and high-performance home is sponsored by the National Association of Home Builders of The United States and presented by the NAHB Leading Suppliers Council and Pro Builder. The New American Home is continually recognized among the nation's most prestigious home exhibits and is one of NAHB's most successful and visible programs.





THE NEW AMERICAN HOME 2024

In the heart of the picturesque Ascaya development in Henderson, Nevada, The New American Home 2024 has been built as a state-of-the-art exhibition home. Sun West Custom Homes embarked on the ambitious project to design-build the 7,722 SF exhibition home. This "Sanctuary on Sky Arc," a single-story contemporary masterpiece, will be unveiled at the prestigious annual International Builders' Show®. With its stunning panoramic views of the Las Vegas strip and the desert mountainscape, this was a location chosen with precision and intention.

The journey began with a vision to not just build a beautiful home but to craft a unique and awe-inspiring showpiece. Their design-build team understood the importance of maintaining a strict schedule

and adhering to a meticulous plan to deliver a truly exceptional product. LSC Members and sponsors have played a vital role in bringing innovation, sustainability, and cutting-edge technology to life through this project.

The foundation of this one-of-a-kind home is based in energy efficiency and innovative design with LG HVAC's cutting-edge energy performance products and Broan-NuTone's Energy Recovery Ventilators (ERV) are at the forefront. The journey to a comfortable home started with their state-of-the-art solutions. The spray foam and batt insulation provided optimal insulation paired with Fi-Foil's reflective materials playing a pivotal role in ensuring the highest energy efficiency. Tamlyn's housewrap and window flashing contribute to



the building envelope and guarantee protection against the elements. Solaria's solar panel array and Enphase microinverters take center stage in capturing renewable energy.

Schneider Electric's electrical panels and components are the backbone of the home's electrical system. Josh AI's voice-controlled home automation and Lutron's lighting control systems offer convenience and cutting-edge technology. Endless hot water is guaranteed with tankless water heaters, while OmegaFlex's incredible gas piping system allows for efficient distribution for indoor and outdoor products. Top-tier kitchen appliances by Signature Kitchen Suite and SMEG USA are seamlessly integrated into the connecting kitchen, pantries, and wet bar area. LG's laundry appliances are showcased in the laundry room, master closet, and casita, providing time and energy savings for the home.

Simpson's Strong Walls provide the structural integrity needed, while the waterproofing systems and anti-fracture tile underlayment ensure the durability of the home. Dal-Tile's exquisite tiles and hard surfaces are used throughout the home to enhance the essence of indoor-outdoor living. Euclid Chemical's specialty concrete products incorporate synthetic fiber technology create unique elements for the patio areas.

The home's aesthetic is enhanced by Cornerstone Building Brands / StoneWorks stone veneer, creating a captivating façade as Sherwin-Williams' exceptional paint and epoxy finishes add the final touch of refinement. Garage doors and operators that were provided by Clopay and LiftMaster, not only adds a layer of security but also blends seamlessly with the home's modern contemporary design. Brown Jordan Outdoor Kitchen cabinets, including FireMagic appliances, elevate the outdoor dining experience while Infratech's radiant heaters transform the patio into a year-round entertaining space. Travis Industries' fireplaces and fire features offer warmth, light and a relaxing atmosphere while entertaining guests during any social gathering.

Sun West Custom Homes desired to inspire relaxation by seamlessly integrating the retreat-like qualities of the home with warm and welcoming neutral earth tones and textures. Kohler's beautiful plumbing fixtures, specialty mirrors, and floating vanities, bring luxury and sophistication to the kitchen and bathrooms. Interior cabinets by Wellborn Cabinet, Inc. provide optimal storage solutions while Caesarstone's countertops add a touch of elegance. Masonite's interior doors blend beautifully with the contemporary interior design, while the door and cabinet hardware provide both functionality and style. The tongue and groove materials, coupled with wood cladding, contribute to the overall warmth of the home with dramatic accent walls and intricately designed drop ceilings. Solar tubes and skylights by VELUX-America USA usher natural light into the living spaces, creating a harmonious environment while Progress Lighting and Cooper Lighting fixtures illuminate the home. VintageView's custom-designed wine racking system will showcase a wine collection in style.

The journey to build the "Sanctuary on Sky Arc" is a testament to the power of collaboration and innovation with each entity contributing their expertise in making it truly one-of-a-kind. With sponsors, LSC Members and participating companies at the forefront of technology and sustainability, Sun West Custom Homes created a showcase of modern living that will inspire and captivate all who walk through its doors during the International Builders' Show® in February.



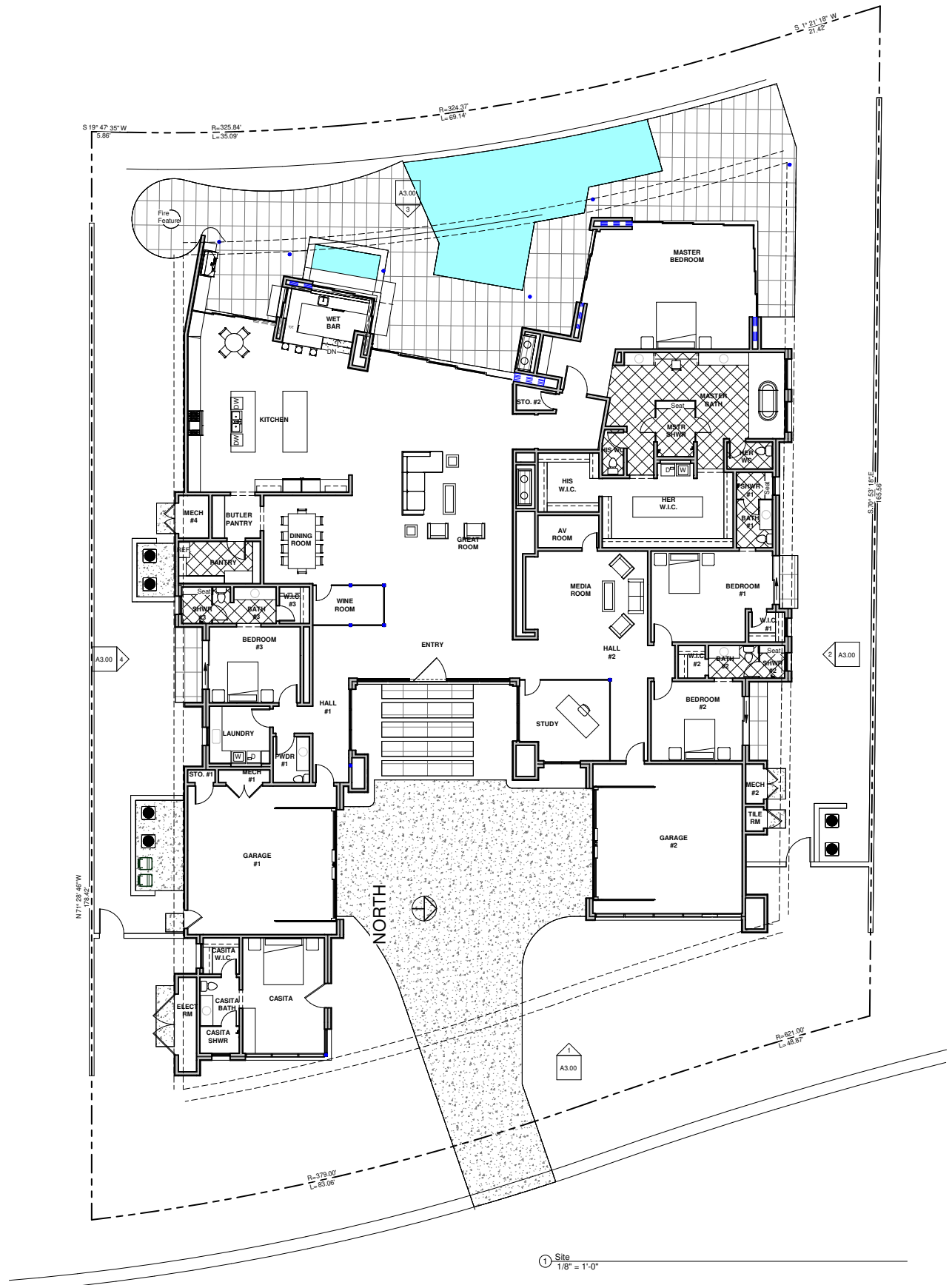
ARCHITECTURE DESIGN

TNAH 2024 is a striking embodiment of modern architectural aesthetics and concepts. Its design boasts a captivating interplay of sharp angles and sleek lines that define its exterior façade. The exterior surfaces feature a blend of contemporary materials, showcasing a harmonious combination of stone, glass, and metal, which reflect the scenic foothills of Ascaya.

Upon entering, one is immediately introduced to the expansive great room area that serves as the central location of the home. This grand space effortlessly merges with the kitchen and dining area, offering an open and inviting atmosphere that encourages social interaction and entertainment. Floor-to-ceiling windows from Western Window Systems line the walls, suffusing the interior with abundant natural light and providing panoramic views of the surrounding Ascaya landscape.

The home's allure extends beyond its walls, with an outdoor entertainment area that serves as an extension of the living space. This area is a testament to seamless indoor-outdoor living, featuring a combination of comfortable lounging spaces, an outdoor kitchen from Brown Jordan Outdoor Kitchens complete with Fire Magic appliances, and a dining area. The design thoughtfully integrates landscaping elements such as water features, lush greenery, and sculptural accents, adding a touch of natural tranquility to the vibrant atmosphere of the city.

Given the desert climate, an outdoor shower finds its place within the design, providing a refreshing oasis to cool off during the scorching summer months. Nearby, a sleek and inviting pool stretches across the outdoor area, offering a luxurious spot for relaxation and recreation. The pool's clean lines and contemporary design complement the overall architectural aesthetic, further enhancing the home's modern allure.



① Site
1/8" = 1'-0"

© 2023 Daniel S. Coletti



OUTDOOR LIVING

Nestled within the captivating expanse of The New American Home 2024, a symphony of outdoor living awaits to embrace the senses. The meticulously landscaped grounds create a harmonious balance between leisure and tranquility. Surrounded by lounging terraces, the pool offers an oasis of serenity. Here, the rippling waters mirror not only the breathtaking surroundings but also an exquisite view of the iconic Las Vegas strip, a luminous testament to the urban nightlife in the desert. Boundaries between the interior and the outdoors dissolve with the seamless transition through the sliding glass doors, rendering the home a true testament to luxurious living in nature's embrace.



BROWN JORDAN OUTDOOR KITCHENS

Brown Jordan Outdoor Kitchens manufactures an extensive line of modular stainless-steel cabinetry in an array of exclusive designer colors, unique door styles and a variety of configurations designed to enhance the outdoors.



STONWORKS

The stone facade from StoneWorks exudes timeless elegance, adding a touch of sophistication and natural beauty that can be attributed to the desert contemporary style of the home.



DAVINCI CUSTOM FIREPLACES

Eye-catching and feature-rich, the award-winning DaVinci Collection fireplaces stand out for their modern aesthetic, heavy-gauge steel construction and technical excellence. This custom fireplace became the focal point of the great room, seamlessly blending aesthetic appeal with warm, inviting ambiance.



WESTERN WINDOW SYSTEMS

Western Window Systems' Series 600 Multi-Slide Door is packed with features that let you take any project to the next level. Its wide panels, modern details, smooth operation, and multiple sill height options blend easily into nearly any space.

INTERIOR DESIGN

Experience the epitome of modern living with The New American Home® and the exquisite desert contemporary design in the hills of Ascaya. The color scheme Sun West Custom Homes showcases, inspired by the surrounding landscape, seamlessly blends natural earth tones with vibrant desert sunset hues, creating an ambiance of warmth and serenity. The interior spacing strategy embodies an open concept, allowing for effortless flow between the spacious living areas, accentuating the grandiose nature of the design.

Crafted with a meticulous design intent, every element exhibits a harmonious fusion of modern luxury and rugged desert charm. Floor-to-ceiling windows from Western Window Systems bathe the interior in abundant natural light, creating a connection to the breathtaking outdoors. This design is perfectly suited for Las Vegas, as it encapsulates the city's vibrant energy while providing an oasis of tranquility amidst the bustling urban landscape.

Masonite's interior doors combine timeless craftsmanship with innovative design, offering a unique array of finishes in this desert contemporary home. With cutting-edge technology, their M-Pwr door protects the interior of the casita and seamlessly integrates smart features that provides homeowners with enhanced security and convenient access control, redefining the modern concept of interior doors. Indulge in the allure of minimalist aesthetics and carefully selected textures that exemplify the desert contemporary style. The New American Home® 2024 not only reflects innovation with a contemporary style, but also offers a respite from the desert heat with its thoughtfully integrated sustainable features.





MASONITE

Make a lasting impression and reflect the quality of the homes you build with your homes by choosing Masonite® solid core doors. With 70% more sound-dampening material than our standard hollow core doors, our solid core interior doors ensure noise control and privacy throughout the home.



PROGRESS LIGHTING

Bring a sophisticated natural presence to your living spaces with this array of Laila chandeliers. Its artisanal frame is created from hand-knotted jute strands in an intricately woven, double-cage design that creates a delightful interplay of shadows and inviting ambient light to dining rooms, bedrooms and great rooms.



PROFESSIONAL KITCHEN

As the heart of the home, the kitchen exudes spaciousness and sophistication at every turn. Bathed in natural light pouring through expansive windows, it becomes a luminous haven for culinary creativity. Seamlessly blending the indoor and outdoor environments, the kitchen boasts a flexible design that effortlessly extends into the adjoining outdoor spaces, allowing for a harmonious connection between cooking and entertaining. This kitchen serves as both a culinary sanctuary and a social hub, perfectly encapsulating the essence of modern, open-concept living.



KOHLER

The Purist Suspend kitchen faucet mounts from your ceiling and is out of your way until you want to use it. With its seven-foot braided hose, you have the freedom to move the spray head around your kitchen to fill a kettle on your stove or water a potted plant on your floor.



CAESARSTONE

The crystalline magic of marble is a phenomenon that takes shape over millions of years. Its iconic veining comes in an endless array of organic styles, each of them peerlessly unique. Sleet is one such distinctive stone, recognizable from its long, elegant lines. Combining such warmth and graceful beauty, Sleet is a highly durable porcelain by Caesarstone.



SIGNATURE KITCHEN SUITE

Signature Kitchen Suite offers a full line of luxury built-in kitchen appliances to entice the appetites of the most discerning homebuyers. From the industry's first built-in sous vide pro ranges to wine column refrigerators with exclusive Wine Cave™ technology, their high-performance appliances deliver the ultimate precision cooking experience.



VINTAGEVIEW

The Helix Wine Rack hangs wine bottles to create distinctive custom wine storage. Starting at just a few bottles, this wine rack system comes in (4) configurations and installs with ease.



PRIMARY SUITE

This sanctuary presents an awe-inspiring panorama that captures both the vibrant pulse of the Las Vegas strip and the tranquility of the foothills in Ascaya. Crafted with a keen understanding of today's lifestyles and trends, the primary suite is more than a room; it's an experience. Sunlight gently filters through the multi-slide glass doors, casting a warm embrace upon the contemporary yet timeless furnishings. An ensuite bathroom, adorned with elegant fixtures and luxurious amenities, stands as a testament to modern comfort and style. It is here where panoramic beauty and thoughtful luxury converge to create a haven that caters to both the senses and the spirit.



KOHLER

The primary suite has been transformed into a sanctuary of luxury and relaxation with the incredible collection of Kohler bath products. From the Veil® freestanding bath to the Numi® 2.0 and Eir Intelligent toilet, you can immerse yourself in the art of luxurious living and turn your nightly routine into a full pampering experience.



WELLBORN CABINET

Embrace tranquility in the primary bathroom with custom cabinetry from Wellborn Cabinet, Inc. Designed to evoke a sense of serenity, the seamless integration of clean lines, muted tones, and natural materials create a harmonious sanctuary.



LG'S LAUNDRY APPLIANCES

Experience a revolution in laundry care with LG's innovative line of laundry appliances. The smart front load washer has built-in sensors to detect fabric texture, soil level, and load size to automatically select the right wash motions and temperature settings for each load. The front load gas dryer contains Sensor Dry technology to eliminate the guesswork with built-in sensors detecting fabric texture, load size and moisture. The LG Styler refreshes clothing between dry cleanings, sanitizes and reduces odors.



HALO BY COOPER LIGHTING SOLUTIONS

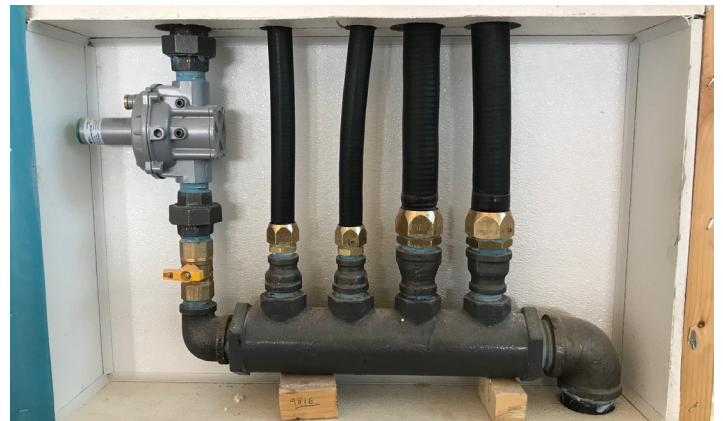
This 4-inch small aperture, new construction housing is perfect for ultra-shallow plenums that require long life, energy savings, and optical control. The housing is compatible with a variety of HALO LED modules and trims, allowing users to customize their lighting to suit their specific needs. Additionally, the H245ICAT housing is designed for direct contact with insulation and meets restricted air flow requirements, making it both safe and efficient.

EFFICIENT MEANS AND METHODS



KOHLER HOME ENERGY

This innovative generator from Kohler Home Energy reduces grid dependence for the home, enabling power allocation to home appliances and other critical products during a power-loss emergency.



OMEGA FLEX

Counterstrike® CSST has been designed with a jacket material that has energy dissipating properties to protect the stainless-steel pressure liner as well as other system components from lightning damage.



LG AIR CONDITIONING TECHNOLOGIES

LG indoor and outdoor residential HVAC systems provide quiet operation and sleek and stylish design with compact outdoor footprints, giving builders the flexibility to design an HVAC system around the needs of the specific project. LG systems are comprised of cutting-edge technologies which contribute to their efficiency, quality and performance, including the impressive heating capabilities of LGRED° technology and the connected home HVAC experience of LG ThinQ™.



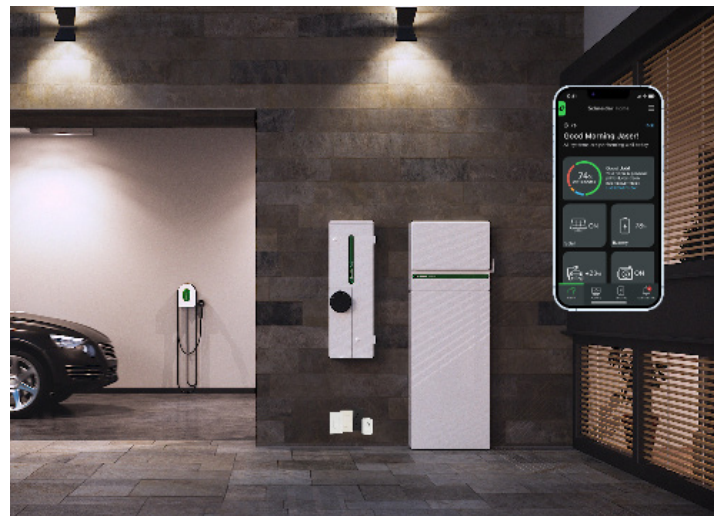
FI-FOIL COMPANY

Foil multi-layer reflective insulation provides R-value and notably reduces 95% of radiant heat transfer across wall and ceiling systems for greater thermal performance, comfort, and less load on HVAC systems. Premium multi-layer reflective technology improves overall energy efficiency, sustainability, and resiliency of buildings.



TAMLYN

TamlynWrap® Drainable Wrap is a unique moisture management product from Tamlyn. This innovative product combines a high-performance Water Resistant Barrier (WRB) with a unique drainage pattern. Its unique design can remove 100 times more bulk water from a wall versus standard wraps.



SCHNEIDER ELECTRIC

Schneider Electric's purpose is to empower all to make the most of our energy and resources, bridging progress and sustainability for all. We call this Life Is On. The mission is to be your digital partner for Sustainability and Efficiency.

PERFORMANCE

Thermal Envelope

- Unvented and air sealed attic with Holcim polyurethane spray-foam insulation (R-19).
- Western windows and doors with low-e coating, argon gas fill limits solar heat gain and optimizes air tightness (U-factor average 0.35 and SHGC average of 0.24).
- Exterior frame walls sheathed with insulation board (R-4.2) and Holcim open-cell polyurethane spray-foam insulation and Fi-Foil Hi-Fi (R-7.1) reflective wall insulation.
- AeroBarrier building envelope air sealing.
- Overhangs to aid in protecting the home from the harsh Nevada sun.
- Light colored exterior to assist in reflecting the sun.
- Air infiltration performance tested on-site resulted in 0.35 ACH(50). An effective combined leakage area of the thermal envelope of just 29.4 square inches, a little over 20% of a single square foot.

HVAC

- HVAC: advanced heat pump HVAC systems and controls from LG Air Conditioning Technologies
- Mechanical ventilation provided by Broan NuTone's AI Series.
- Space conditioning system to be located entirely within the conditioned space, minimizing any conditioned air leaking to the exterior.

Water Heaters

- Rinnai ENERGY STAR®-rated tankless water heaters.
- Enovative AutoHot on demand hot water recirculating pumps.

Electrical

- 100% energy-efficient LED lighting fixtures from Progress Lighting for all interior and exterior Kichler lighting.
- LG and Signature Kitchen Suite ENERGY STAR®-rated appliances.
- Pentair IntelliFlo3® VSF ENERGY STAR®

Solar Array

- 31.08 kW renewable energy solar array utilizing 84 Solaria PowerXT 370-watt solar panels with 84 Enphase IQ7A

Energy Efficiency and Innovation

- As one of the NAHB's official show homes, The New American Home (TNAH) 2024 is a symbol of energy efficiency and innovation. Its energy-efficient features can be used in homes in a hot climate at any price point with similar energy savings. The home exhibits innovative

products from manufacturers all over the world. TNAH 2024 is designed to exceed the requirements for certification to the Emerald level of the National Green Building Standard™. The home is certified to the EPA ENERGY STAR® for Homes, the EPA's Indoor airPLUS and the DOE Zero Energy Ready Home standards.

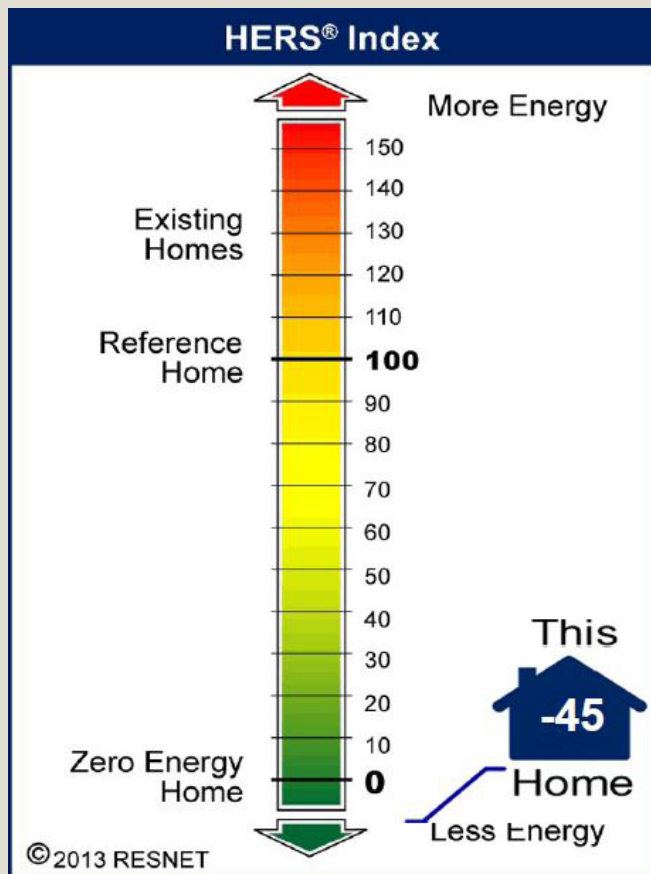
- Two Trails, Inc. worked closely with Sun West Custom Homes to ensure energy efficiency and innovation in TNAH 2024. Without the solar array, this home has a projected HERS Index of 53, it is designed to be 47% more efficient than the average new code-built home. The home has a projected HERS Index of 54, 46% more energy efficient than the average code-built home. The home incorporates 84 high-efficient Solaria PowerXT 370-watt solar panels to power its electrical systems. The registered HERS Index with the solar PV system is a -45!

Water Efficiency Features

- In addition to energy savings, this home is designed to achieve an estimated 50% reduction from baseline in water use. This remarkable water use reduction is made possible using low-flow water fixtures, natural indigenous landscaping, and a high-efficient irrigation system. Water saving features include:
 - Kohler low-flow, EPA WaterSense certified 1.2 GPM lavatory faucets and an average of 1.28 GPF toilets provides the indoor water use reduction.
 - High-efficient micro spray, driplines and irrigation controller contributed to the outdoor water use reduction.

Indoor Environmental Quality Features

- Indoor Environmental Quality encompasses the conditions inside a home, and their effects on residents. The New American Home 2024 incorporates innovative strategies, creating an indoor environmental quality that enhance the lives of homeowners, protects occupants' health, and improves quality of life. Indoor Environmental Quality strategies include:
 - Sherwin Williams Low-VOC paints and finishes and low-VOC interior adhesives and sealants.
 - MERV 13 space conditioning AC air filters.
 - HVAC ducts are sealed during construction to prevent pollutants from construction activities from entering the system.
 - Whole Building ventilation system configured to allow the correct amount of fresh air into the home.
 - Eco-Friendly cabinets – Formaldehyde free and material certified by the Forest Stewardship Council.



Two Trails worked closely with Sun West Custom Homes to ensure energy efficiency and innovation in The New American Home. Without the solar array, the home has a projected HERS Index of 54.

When factoring in the Solaria PowerXT 370-watt solar panels, the HERS Index with Solar PV is a -45!

TECHNOLOGY

Josh Ai Integration

Enjoy efficient smart home accessibility with the Josh App or conveniently set the mood with contextual voice commands. Josh knows its role and continues to adapt, enabling users to freely interact with their surroundings and automate their lifestyle in whatever way feels most natural.

Lutron HomeWorks System

HomeWorks by Lutron is the ultimate whole-home automation system. Fully tunable lighting, whisper-quiet shades, and hand-crafted controls all come together to transform spaces and deliver homeowners unmatched style, ease, and comfort. Supporting more than 10,000 devices, the system integrates seamlessly with security, climate control, A/V, and voice for complete compatibility and convenience.

Optimized Lighting Solutions

Lutron’s intuitive controls allow homeowners to personalize lighting scenarios, from vibrant dinner parties to cozy evenings, all from the convenience of a smart device. Progress Lighting brings forth a legacy of sophistication, offering fixtures that blend seamlessly with contemporary aesthetics. Cooper Lighting, on the other hand, introduces a touch of modernity and efficiency to illuminate every corner of this home with precision. The integration of Progress Lighting and Cooper Lighting not only elevates the aesthetics of the home but also addresses the practical aspects and spacing of lighting throughout the home. Through the integration of Josh AI, this collaboration ensures that homes are not just well-lit, but exude a sense of timeless elegance.

LG OLED and Micro LED Displays

From the 97-inch LG OLED TV in the Great Room, to the Man Cave’s 83-inch model, from 65-inch units in the bedrooms and casita to the

wet bar’s 55-inch set, LG Electronics’ “Gallery Design” OLED G evo TVs are featured throughout TNAH. These state-of-the-art 4K UHD TVs deliver a jaw-dropping 8.3 million individually lit pixels for unmatched picture and colors. Not to be outdone – and taking TNAH’s entertainment to the next level – the 136-inch LG MAGNIT MicroLED luxury residential display offers an extraordinary home cinema and digital art experience.



DOORBIRD

The motion sensor with 4D technology on this video door station from DoorBird provides close to 33’ of coverage with 12 infrared LEDs for night vision capability. The Smart Transmission Mode (STM) provides real time audio/video communication that is optimized for mobile devices via Wi-Fi, 3G, 4G and 5G.



LIFTMASTER

The Elite Series® Battery Backup garage door opener from LiftMaster is critical for operational continuity during power outages to ensure the garage is secure during power failures. The smart home integration allows for control and the ability to monitor the garage remotely through the myQ® app.



CLOPAY

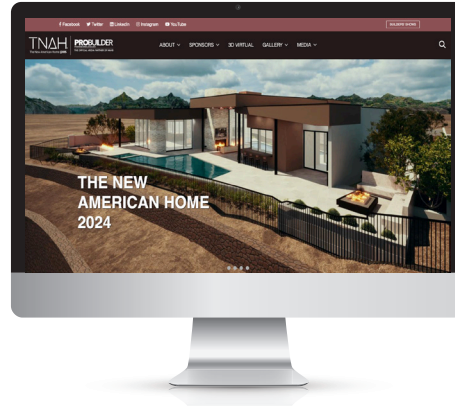
Clopay Canyon Ridge garage doors are constructed in a durable, low-maintenance faux wood composite that resists rot and weathering. An energy-efficient, polyurethane foam insulated steel core provides a 20.4 R-value.

PROBUILDER

PROFESSIONAL BUILDER

THE OFFICIAL MEDIA PARTNER OF NAHB

For more info and videos about the products and our partners visit www.tnah.com



WOULD LIKE TO THANK THEIR PARTNERS

Platinum



Gold



Silver





48-INCH BUILT-IN FRENCH DOOR REFRIGERATOR

With a wide interior that easily fits oversized platters and features like the exclusive 5-mode Convertible Drawer and Dual Ice Maker with Craft Ice™, the 48-inch Built-in French Door Refrigerator is designed to fit any kitchen's style and every entertainer's needs. Available now for kitchen designs with refrigeration cutouts 47 1/2", the product's versatile design accommodates true flush or proud installation without an exposed grille and drawers that line up with standard countertop height.



DOUBLE WALL OVEN WITH STEAM-COMBI

Meet the ideal complement to our rangetops and cooktops. The innovative power of Steam-Combi gives you everything you need to enjoy sous vide cooking - all with the capacity you need for a big meal. Plus steam's atomized water traps odors to ensure there's no flavor transfer throughout the oven during multi-rack cooking. The Speed Clean™ feature will have your oven sparkling in only ten minutes using water. You can even cook and monitor from any location thanks to our oven's WiFi technology. And thoughtful engineering means it can be installed completely flush to match your style.



24" INTEGRATED REFRIGERATOR WINE COLUMN

Engineered with an emphasis on providing the perfect cave-like environment, the 24-inch Column Wine Refrigerator protects wine against its four biggest threats: vibration, light, and variations in temperature and humidity. Ready to pair with any number of Signature Kitchen Suite refrigerator, freezer or wine columns, the versatile design allows for flush installation, along with easy door reversal. Thanks to its WiFi capabilities, this 113-bottle capacity column enables home owners to manage their wine collections through the ThinQ App®. A multi-award-winner, the Wine Column was selected by the NKBA as a Best of KBIS 2020 finalist.



POWERSTEAM® PANEL-READY DISHWASHER

Designed to blend seamlessly into the kitchen, the PowerSteam® Panel-Ready Dishwasher features a paneled door engineered to safely slide away as it is opened, allowing the dishwasher to be mounted at any height while keeping it hidden behind the panel. The EasyRack™ Plus system adjusts to just about any load of dishes to help ensure optimal cleaning performance. The height-adjustable 3rd rack provides more space and flexibility to fit everything from flatware to espresso cups. And at 44 dBA, it's one of the quietest on the market. A stainless steel version of the PowerSteam™ Dishwasher is also available.



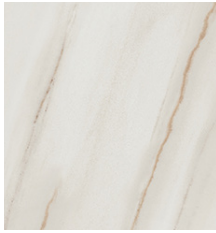
48" PRO RANGETOP WITH SOUS-VIDE AND INDUCTION

Much like its full-sized range cousin, the 48-inch Pro Rangetop is the versatile workhorse of the industry. It's the only pro rangetop on the market to include built-in sous vide, four gas burners, as well as two-zone induction - a first-to-market thanks to utilizing 240 volts as opposed to 120 volts. This award-winning rangetop provides everything needed to prepare restaurant-quality meals with less space.



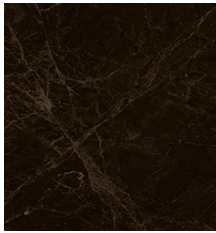
24" MICROWAVE OVEN DRAWER

With 1.2 cubic feet capacity, the Microwave Oven Drawer saves counter space and provides plenty of room to heat large casserole dishes and tall mugs. Flexible installation options include below an island or peninsula, and in standard cabinetry. A heat deflector is included for flush or true flush installation for an integrated, streamlined look. The purposefully designed Easy Touch Automatic Drawer system helps to prevent spills by easing open with a gentle pull or the touch of a button, while the SmoothTouch™ glass controls easily wipe clean.



502 SLEET PORCELAIN COUNTERTOP

The crystalline magic of marble is a phenomenon that takes shape over millions of years. Its iconic veining comes in an endless array of organic styles, each of them peerlessly unique. Sleet is one such distinctive stone, recognisable from its long, elegant lines. Combining such warmth and graceful beauty, Sleet is a highly durable porcelain by Caesarstone. Several prominent slanted veins trace the surface. Whites and off-whites interplay throughout, creating discrete streaks within its honed finish base.



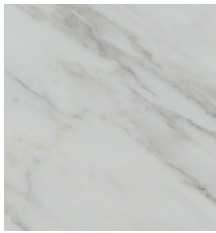
514 EMPRADA PORCELAIN COUNTERTOP

Condensed into several layers of intense dark brown, Emprada's earth colored base feels as solid as its Ultra Rough finish. Evenly crisscrossed by fine chalk lines and vigorous markings, with putty brown and mud yellow veins, the stony surface appears cracked by time. This moving design therefore is a lively way to add energy, luxury and organic warmth to classic kitchens or bathrooms. Stainless hardware and ovens, wooden cabinetry and light neutrals are all elevated by this iconic marble that is currently experiencing a revival. For maximum impact, Emprada creates sophistication and mystery when combined with dark tiles and black interiors.



510 IMPERMIA PORCELAIN COUNTERTOP

Impermia is a passionate stone, heated up by shards of fine lines that animate the surface. Similarly, Impermia's deep black honed ground is marked by beautiful veins that crisscross its mysterious honed surface, striking like lightening in the night sky. When combined in inversed slabs, their juxtaposed graphic action gains even more power; dramatic slivers that punctuate its space.



505 ARCHETTA PORCELAIN COUNTERTOP

With its soft ivory white base, Archetta brings the beauty of natural stone to a sophisticated porcelain surface. Subdued grey veins dissolve into this gentle design, uplifted by muted green and yellow deposits, adding authentic mineral depth to its Honed finish. The clouded translucency of marble is captured all over the slab, making it versatile for counters, tabletops, splashes and islands. This classic material blends seamlessly into interiors with pale or natural palettes, bringing a profusion of light into the kitchen. Cabinetry in new teal or matcha hues provides a savvy backdrop, connecting with Archetta's fresh vein highlights.



405 MIDDAY QUARTZ COUNTERTOP

A sandy white surface is embellished by warm grey and soft white flecks adding texture and depth to its neutral façade. With the popularity of outdoor gathering spaces comes the desire for materials that can allow for a leisurely outdoor lifestyle. The organic look of Midday correlates with the beauty of nature, harmonizing with red cobblestoned pathways, surrounding green foliage, and terracotta garden adornments. The neutral shade works equally well next to stainless steel cooktops, and bold brass accents. This Caesarstone design has been innovated and tested to withstand the most extreme environmental conditions for the long term.



5222 ADAMINA QUARTZ COUNTERTOP

Adamina is a veil of calming organic neutrals, enveloped by the subtle tactility of Caesarstone's Natural finish. It complements materials that embrace calmness in the home, working well with walls in off-white, warm grey, and beige, or tiling and cabinetry in this hushed palette. The surface blends-in with casual furniture, and flows naturally into open spaces. It can also take-on a deeper design twist, by combining it with light woods or concrete. Stainless hardware keeps the sandy surface looking clean and simple, since its down-to-earth aura makes it an ideal backdrop for a relaxed room.



SOPHISTICATED LEISURE KITCHEN

Our cabinets boast unmatched craftsmanship, a wide array of design options, and top-notch materials. From kitchens to bathrooms and beyond, Wellborn Cabinetry elevates any space with elegance and functionality. Plus, we prioritize sustainability, using eco-friendly practices and materials.



MODERN GLAM KITCHEN

Elevate your projects with Wellborn Cabinetry, where craftsmanship meets innovation. Our premium cabinets are crafted with precision, ensuring durability and timeless style. With a wide range of customizable options, you can cater to every client's unique taste. Plus, our commitment to sustainability means you're choosing environmentally responsible materials.



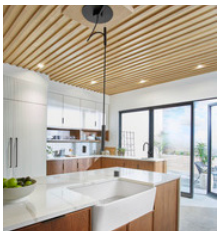
MODERN ZEN

Our frameless cabinets offer a modern and elegant solution for your kitchen or bathroom. With no visible face frame, you'll enjoy seamless aesthetics and maximize storage space. Crafted with precision, our Aspire Cabinetry ensures durability and strength while maintaining a minimalist look. These cabinets are designed to elevate your space, providing clean lines and a contemporary feel. Experience the perfect blend of style and utility with our frameless cabinets, designed to inspire your dream interior. Aspire to transform your home today with the sophistication of frameless cabinetry.



CAPE RETREAT BATH

Elevate your Cape Retreat bathroom project with Wellborn Cabinet's unmatched excellence. With 62 years of crafting exquisite cabinetry, we offer timeless design, impeccable quality, and endless customization options. Wellborn Cabinet's commitment to sustainability ensures eco-friendly choices for your coastal oasis. Our extensive range of finishes, styles, and storage solutions caters to your unique vision, enhancing functionality and beauty. Crafted in the USA, our cabinets come with a Limited Lifetime Warranty, providing peace of mind and durability. Choose Wellborn Cabinet for the Cape Retreat bathroom, where form meets function and luxury meets longevity, redefining your coastal haven.



PURIST® CEILING-MOUNT KITCHEN SINK FAUCET

The Purist Suspend kitchen faucet mounts from your ceiling and is out of your way until you want to use it. With its seven-foot braided hose, you have the freedom to move the sprayhead around your kitchen to fill a kettle on your stove or water a potted plant on your floor, eliminating the taxing chore of lifting heavy items in and out of your sink to fill or clean. The Purist Suspend ceiling-mount faucet was designed for functionality. It was designed to make your tasks easier in the kitchen. But it will also be your kitchen reimaged.



HELIX WINE RACK

In the most minimalist way, the Helix Wine Rack hangs wine bottles to create distinctive custom wine storage. Starting at just a few bottles, this wine rack system comes in (4) configurations and installs with ease. Available in Matte Black, Cool Gray, and Golden Bronze finishes. A companion Post system allows for floor-to-ceiling installations, up to 17' in total height.



VINTAGE VIEW®
MOVING WINE STORAGE FORWARD

**NUMI® 2.0 ONE-PIECE ELONGATED SMART TOILET, DUAL-FLUSH**

The Numi 2.0 smart toilet combines unmatched design and technology to bring you the finest in personal comfort and cleansing. Kohler's most advanced toilet now offers personalized settings that let you fine-tune every option to your exact preferences, from ambient colored lighting and built-in audio speaker system to the heated seat with hands-free opening and closing. Other upgrades include power-save mode for energy efficiency, emergency flush for power outages, and an intuitive remote that complements the KOHLER Konnect® app for advanced control.

**VEIL® 65-7/16" X 36-7/16" FREESTANDING BATH**

Veil's flowing and immaculately balanced curves evoke a sculpted simplicity in tune with contemporary style. This Veil freestanding bath offers a luxuriously deep bathing experience with supportive contours that cradle your body. KOHLER Lithocast® cast resin material allows for geometries with dynamic style and crisp, hand-finished detail rich with character. KOHLER Lithocast® Gloss cast resin is lightweight and easy to clean, with a high-gloss finish.

**ANTHEM™ DIGITAL CONTROL**

The innovative Anthem digital control puts the control of your custom shower at your fingertips. A sleek, minimalist display lets you configure and control your outlets, temperature, and flow, creating a personalized showering experience every time. Optional built-in eco mode lets you conserve water by using just one outlet at a time, and the summary screen helps to promote mindful water usage.

**LG STUDIO FRONT LOAD WASHTOWER**

The largest capacity WashTower yet. Beauty meets function with LG STUDIO's large 5.0 cu. ft. washer, elevating the home laundry room with a premium vertical laundry solution that makes laundry feel easy- and look good. The exclusive Center Control™ panel gives easy access to built-in intelligence, which can select the optimal wash & dry motion and temperature settings for fabric care. With the LG TurboWash™ 360, with five jets with variable sprays, you'll have a 10 lb. load completely clean in under 30 minutes. LG TurboSteam™ technology refreshed clothes, toys, pillows and more in between washes.

**7.4 CU.FT. ULTRA LARGE CAPACITY FRONT LOAD GAS DRYER**

Designed with the homeowner in mind, the Ultra Large Capacity Front Load Dryer is up to any task. Sensor Dry technology eliminates the guesswork with built-in sensors detecting fabric texture, load size and moisture to automatically adjust drying time for fabric care and energy savings. The digital dial control gives users more information, with setting descriptions, prompts, status updates and cycle time details at every turn. Rest assured with ThinQ Care, the appliances will be running smoothly with proactive usage, maintenance and diagnostic alerts directly to the connected phone.

**LG STUDIO STYLER**

The ultimate laundry room is not complete without the LG STUDIO Styler®. Refresh garments in minutes with the smart wi-fi enabled steam clothing care system. The LG STUDIO Styler sanitizes, refreshes and dries anything from jackets to backpacks to stuffed toys and throw pillows. The steam technology removes airborne allergens like pollen, pet dander and dust without the use of bleach, soaps or other harsh chemicals. Homeowners will enjoy the slim design and standout style with scratch-resistant tempered glass door and intuitive LED controls.



Life's Good



SERIES 980 PIVOT DOOR

Boldly dramatic and decidedly modern, Western Window Systems' Series 980 Pivot Door stands out in any space. With the ability to swing in or out, its unique distribution of weight makes creating large openings with just a single panel not only possible, but desirable. To take your creativity even further, it can be paired with any of our window styles.



SERIES 600 FIXED WINDOW

Whether you want to create a single-panel opening, door-sized opening, or one that spans an entire wall, a Western Window Systems Series 600 Fixed Window or Window Wall allows you to create custom views from various glass sizes and shapes. And because they're designed to integrate with ventilating window styles as well as hinged and sliding doors, they're flexible as well as functional.



SERIES 600 MULTI-SLIDE DOOR

Western Window Systems' Series 600 Multi-Slide Door is packed with features that let you take any project to the next level. Its wide panels, modern details, smooth operation, and multiple sill height options blend easily into nearly any space. And with panels up to 12 feet tall (maximum 70 square feet), your indoor-outdoor living ideas can be larger than life.

HALO



HALO ML4 MODULAR LED DOWNLIGHT SERIES

Upgrade your lighting game with the HALO Modular LED Series. Say goodbye to outdated downlights and hello to a cost-effective, high-performance solution that transforms any space. Customize your lighting with interchangeable optics and magnetic trims to match any finish. Fine-tune lighting to perfection with selectable brightness and color temperature settings including dim-to-warm. Plus, HALO is committed to sustainability, with ENERGY STAR® certification, compliance with high-efficiency standards, and plastic-free packaging. Join the revolution and switch to the HALO Modular LED Series today for a brighter, more sustainable future.



HALO 4-INCH H245 RECESSED HOUSINGS

Our complete line of recessed housings provides installers with patented contractor-friendly features for quick and easy installation. This 4-inch small aperture, new construction housing is perfect for ultra-shallow plenums that require long life, energy savings, and optical control. The housing is compatible with a variety of HALO LED modules and trims, allowing users to customize their lighting to suit their specific needs. Additionally, the H245ICAT housing is designed for direct contact with insulation and meets restricted air flow requirements, making it both safe and efficient. Another reliable and high-quality lighting solution for any space.



HALO SMD SURFACE MOUNT LED DOWNLIGHTS

The HALO SMD Surface Mount Downlight series offers a modern, low-profile design and high performance for both residential and commercial installations. Available in 4- to 14-inch rounds and squares that can mount directly to junction boxes or retrofit into recessed housings. With field-selectable color temperatures, you can adjust lighting to suit any environment. HALO is committed to sustainability with ENERGY STAR® certification, high-efficiency lighting standards compliance, and plastic-free packaging. Join a brighter, more sustainable future with HALO.



LOWERY PENDANT

Raise the bar on contemporary design with Lowery. Layered rectangular shields coated in a matte black iron finish are artistically combined with distressed antique silver leaf panels against a black frame. Light sources glowing from inside the structure cast a shimmering reflective illumination that highlights the beautiful contrast between light and dark. Lowery delivers a stately ambient light to dining rooms, great rooms, halls and foyers in luxe industrial, contemporary and rustic modern settings.



COFIELD PENDANT

Showcasing understated elegance, the Cofield Pendant features a slender, clean design. Suspended from a cord accented by a metal stem and a cylindrical glass shade, Cofield provides contemporary style to mid-century modern and transitional settings, delivering ambient illumination to bedrooms, kitchens and bars.



LAILA CHANDELIER

Bring a sophisticated natural presence to your living spaces with Laila. Its artisanal frame is created from hand-knotted jute strands in an intricately woven, double-cage design that creates a delightful interplay of shadows and inviting ambient light to dining rooms, bedrooms and great rooms in global and coastal settings. This fixture is part of the Progress Lighting Design Series, a lighting collection offering fashionable styles and affordable luxury lighting for the home.



MASONITE INTERIOR SOLID CORE DOORS

Make a lasting impression and reflect the quality of the homes you build with your homes by choosing Masonite® solid core doors. With 70% more sound-dampening material than our standard hollow core doors, our solid core interior doors ensure noise control and privacy throughout the home. Built with enhanced durability, these doors also reduce the likelihood of callbacks, saving you valuable time and resources. With a wide range of designs available, solid core doors can effortlessly become the standard in any home design. Set your homes apart with Masonite® solid core doors.



M-PWR SMART DOOR

Masonite empowers the door to do more with the first-ever powered and fully integrated residential exterior door bringing security and convenience to another level. With M-Pwr Smart Doors, Masonite provides builders with a smart advantage to build their business. M-Pwr unlocks the potential of any home with smartphone-controlled technology, integrated power, LED welcome lighting, video doorbells, and smart locks. It's accessible technology that homeowners want, brought together and backed by Masonite – and offered to builders via streamlined ordering and installation process that simplifies integration of smart tech into a new home build.



MASONITE PERFORMANCE DOOR SYSTEM

The Masonite® Performance Door System protects homes from the elements, which is good for your customers and for your business. This fiberglass door and its rot resistant frame is equipped with a 4 Point Performance Seal that's 64% better at keeping air and water out than the leading competitor. Performance you can count on not only means happier customers, but also fewer callbacks and claims, saving you time and money spent on costly replacements. With more warranty coverage on more components, and a 10-year limited full replacement warranty, you can close with confidence with a Masonite® Performance Door System.



POWERED BY myQ®



ELITE SERIES® BATTERY BACKUP WALL MOUNT GARAGE DOOR OPENER

Builders and homebuyers choose this all mount design to free up ceiling space in the garage, reduce noise and vibration. Add myQ® smartphone control with purchase of 828LM Internet Gateway. Features a DC motor for ultra quiet operation. Automatic Garage Door Lock deadbolts your door after closing.



LIFTMASTER SECURE VIEW™ ULTRA-QUIET BELT DRIVE SMART OPENER

The LiftMaster Secure View™ series is no ordinary line of garage door openers. Builders, install the smart home device that lets homebuyers see more with an integrated camera and advanced lighting. The myQ® app allows them to both see and control the busiest door of their homes from their smartphone - unlike video doorbells or standalone cameras. Featuring: Ultra-Quiet Belt Drive Smart Opener with Camera, LED Corner to Corner Lighting™ and Battery Backup. The Built-in camera adds video and 2-way audio communication to the myQ® app. Homeowners control, secure and monitor the garage with the myQ app- anytime, from anywhere.



LIFTMASTER MYQ SMART GARAGE VIDEO KEYPAD

The myQ Smart Garage Video Keypad lets homeowners see and control who opens their garage door. Homeowners can manage household access by assigning unique PIN codes for family, guests, or service providers. Innovative features give users peace of mind that they know who is coming and going from their home — and when. Builders take note, homebuyers are willing to pay significant multiples for smart home accessories compared to traditional home products. Why not offer a first-to-market “smart home” version of the traditional garage door keypad? Be the source that provides the innovative smart home products they demand.



DOORBIRD IP VIDEO DOOR STATION D2102KV

For multi-tenant buildings and businesses with 2 units, 2 call buttons, available as flush- and surface-mount. - LAN connection (PoE capable) - 2-way audio - Ultra-wide angle lens, 720p, night vision, 12 IR LEDs - 4D motion sensor, RFID reader - Keypad - 2 freely configurable bistable switching relays



DOORBIRD IP VIDEO INDOOR STATION

For door communication in single-family residences and apartment buildings, available in white and black

- 4" True Color Touch Display
- 2-way HD Audio, up to 102 dB
- Room to room communication
- SIP support
- Home and building automation control
- 3 freely configurable bistable switching relays



DOORBIRD A1121

Multi-technology access control system and stand-alone solution for back and side doors, garages, storage and packing rooms, bicycle and machine rooms.

- WiFi / LAN connection (PoE capable)
- Keypad - 125 KHz and 13.56 MHz RFID reader
- Tamper sensor
- Wiegand interface



HAMPTON DOOR

With the clean lines of the Hampton door style these outdoor kitchens are as beautiful as they are functional. Together, we build the latest trends and innovations in outdoor living for the backyard, rooftop or transition room.

- Modular cabinets for flexible design and easy construction
- 100% stainless steel for maximum durability and strength
- Maintenance-free powder coat finishes protect & enhance



ELEMENTS

Elements, from Brown Jordan Outdoor Kitchens, brings a new vision of outdoor living to your home. In keeping with the brand's commitment to design innovation, the contemporary, freestanding collection takes a modular approach — empowering design professionals to create unique outdoor living spaces. To help keep outdoor living essentials within easy reach and protected from the elements, the collection offers nested drawers as well as doors and drawers with sleek, integrated handles. Configurations include storage cabinets – including the option of pass-through cabinets, which offer access from both sides – as well as cabinetry for grills, refrigerators and trash.



TECNO

TECNO is a Euro-inspired luxury outdoor kitchen line by Brown Jordan Outdoor Kitchens, crafted from stainless steel for durability and powder coated for a beautiful and virtually maintenance-free finish. Features include a sleek frameless design, single-height façade, and nested, soft-close drawers with integrated pulls. Designed with versatility in mind, TECNO accommodates a variety of appliances and configurations, and is equally at home outdoors and indoors.



BEARDSLEY PANEL GREZZO

An elegantly textured modern castle stone, Grezzo is available in five precision cut sizes and multiple colors that can be mixed and matched to create endless design options.



DAVINCI CUSTOM FIREPLACES LINEAR COLLECTION

DaVinci Custom Fireplaces are the most incredible linear fireplaces in the world. These modular fireplaces deliver near-limitless options to fit any design vision for all spaces great and small.



TEMPEST TORCH

A stunning and innovative addition to your outdoor lighting collection, the 20K BTU Tempest Torch goes above and beyond traditional gas torch design. The Tempest Torch offers a dramatic and captivating visual experience that is perfect for patios, walkways, entryways, backyards, pool areas, and more. It features a beautiful signature spiraling flame and transitional stainless steel design that complements all hardscape styles. The Tempest Torch can be installed in four different ways: Ground Post, Deck Post, Pillar Mount, or Wall Mount. Fire Garden's All-Weather 24V Hot Shot™ Electronic Ignition is the most robust and reliable ignition system offered in the industry.



SCHNEIDER PULSE SMART ELECTRICAL PANEL

The Schneider Pulse smart electrical panel is the next generation smart panel that simplifies modern design and functionality. Pulse allows builders to provide their customers with a future-proof solution to add solar, backup power or net zero options now, or in the future. And as part of the Schneider Home solution, Pulse integrates seamlessly via a single mobile app to the other hardware in the system.



SCHNEIDER BOOST SOLAR STORAGE BATTERY

Use stored power for use now or when the power is out with Schneider Boost. Use with the free Schneider Home app to automatically power critical loads during an outage and keep electricity bills low by automatically switching to Boost power when electricity rates are high. Pair with Inverter, Charge, Pulse, or our connected light switches and outlets for an easy management and control in just one app.



SCHNEIDER INVERTER HYBRID SOLAR INVERTER

Connect your homes' solar through Schneider Inverter for efficient, reliably electricity controlled and managed with one easy-to-use app. Complete the solution with Boost, Charge, Pulse, or our connected light switches and outlets for an easy management and control in just one app.



SCHNEIDER CONNECTED LIGHT SWITCHES AND RECEPTACLES

Provide your customers with the convenience of remote, app-based control of lights, appliances and more with our line of Wi-Fi and Z-Wave connected light switches, dimmers, and outlets. And because each device includes energy monitoring, your customers can see how much electricity each device is using, when, and that can help them make smarter decisions about their own usage. Complete the smart energy solution by including Pulse, Inverter, Boost and Charge for easy energy management and control with just one app.



SCHNEIDER CHARGE ELECTRIC VEHICLE CHARGER

Home EV charging has never been easier or looked better than with Schneider Charge. Automate cost-effective and sustainable charging, remotely with the Schneider Home app. Pair Charge with Boost and Inverter to automate charging only using solar power or only when electricity rates are low. Complete the solution with Pulse and our connected light switches and outlets for an easy management and control in just one app.



CANYON RIDGE (5-LAYER) CARRIAGE HOUSE DOOR

Clopay Canyon Ridge garage doors are constructed in a durable, low-maintenance faux wood composite that resists rot and weathering. An energy-efficient, polyurethane foam insulated steel core provides a 20.4 R-value. Available in fifteen carriage house designs with optional windows and decorative hardware. Cladding and overlays can be primed, painted or stained.





SINGLE ZONE VERTICAL AIR HANDLER UNIT (VAHU)

Builders desiring traditional, ducted infrastructure can benefit from inverter technology with the LG Vertical Air Handler Unit. As 4-way configurable unit, it offers the flexibility to install the unit in a way that's best suited for the application, along with powerful heating and cooling capabilities.



SINGLE ZONE INVERTER HEAT PUMP OUTDOOR UNIT

LG's Single Zone Inverter Heat Pump Outdoor Units feature energy-saving features and powerful LGRED® heating technology. Experience optimized airflow, dehumidification, and auto-operation for maximum comfort.



ART COOL™ MIRROR

Builders love LG Art Cool™ Mirror ductless products for their sleek designs, energy-efficient inverter technology and suitability in challenging ducting situations. With flexible installation, low noise, and a 3M Micro Dust filter, they're perfect for efficient, aesthetic, and adaptable construction solutions.



XTREME FLASHING

XtremeFlashing™ is a self-adhering, self-sealing waterproofing tape designed for use around windows, doors, building seams and in general construction. It is composed of a white polymer film that is coated with an aggressive Broad Temperature Spectrum (BTS™) asphalt adhesive. A release liner protects the adhesive and is removed as the tape is installed.



XTREMEINTERIOR

This unique and diverse line of extruded aluminum trims was designed to enhance all practical aspects of drywall construction and transform it into a design medium that can make it the feature, the focus and the most impactful element of a well-designed space. shapes and forms that introduce the appearance of fine metal craft integrated with drywall and panelized surfaces at a fraction of the cost of having custom metalwork designed, detailed and fabricated for a project.



TAMLYNWRAP DRAINABLE WRB

TamlynWrap® Drainable Wrap is a unique moisture management product from Tamlyn. This innovative product combines a high performance Water Resistive Barrier (WRB) with a unique drainage pattern. Its unique design can remove 100 times more bulk water from a wall versus standard wraps.



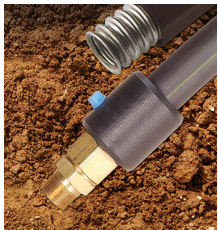
FI-FOIL MULTI-LAYER REFLECTIVE WALL & CEILING INSULATION

Fi-Foil multi-layer reflective insulation provides R-value and notably reduces 95% of radiant heat transfer across wall and ceiling systems for greater thermal performance, comfort, and less load on HVAC systems. Premium multi-layer reflective technology improves overall energy efficiency, sustainability, and resiliency of buildings. Used as part of wall and ceiling systems with spray foam to minimize excess waste and gain flexibility for last-minute wiring changes. Adds R7.1 with a minimum 1-5/8" enclosed cavity air space. 10-year transferable warranty. Solid and Perforated versions available. Perforated version recommended in hot-humid climates. Available in 16" and 24" widths.



AUTOSNAP FITTINGS

AutoSnap® straight fittings are the only CSST fittings that do not require any disassembly or reassembly of the fitting to the TracPipe®CounterStrike® CSST. This greatly reduces installation difficulty and time as there are no small loose gaskets, O-rings, or retainer rings to contend with in a dark and/or cold workplace environment. AutoSnap is CSA listed and features a metal-to-metal cup seal without any exposed stainless steel pipe behind the new fitting.



PS-II UNDERGROUND CSST GAS PIPE

TracPipe®PS-II is a flexible, pre-sleeved, "one step" gas installation system for underground, rooftop, or exterior wall applications. It can be installed under buildings, slab, roads, driveways – it's perfect for gas installations in a variety of applications where speed, reliability, and safety are paramount. Long continuous lengths of TracPipe PS-II makes it easy to handle, lower installed cost and shortened installation time. TracPipe PS-II is available in sizes from 3/8 inch to 2 inches.



TRACPIPE COUNTERSTRIKE CSST GAS PIPE

TracPipe®CounterStrike® is a flexible gas piping system with a protective arc resistant jacket over a non-annealed CSST. The long lengths of CounterStrike® CSST shortens installation time and is cost-effective for residential, multi-family and commercial installations. It is available in seven sizes from 3/8 inch to 2 inches. CounterStrike® CSST is safe, completely reliable, and ideal for new construction, rehab and retrofit projects.

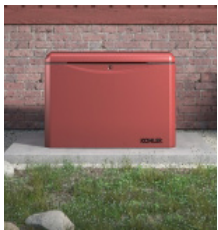


KOHLER

| Home Energy

48KW HOME GENERATOR

The 48 kW KOHLER® generator can power all circuits in larger homes including demanding loads like heat pumps and air conditioners without sacrificing power to other circuits and includes a commercial engine. Built to weather the storms, keep your family comfortable and/or your business running when a utility failure or storm knocks out power.



26KW HOME GENERATOR

The 26 kW KOHLER® generator can power all circuits in larger homes including demanding loads like heat pumps and air conditioners without sacrificing power to other circuits and includes a commercial engine with oil level and oil pressure sensors to protect your engine if your generator needs to be left unattended during extended power outages.

THE NEW AMERICAN HOME 2025



COMING SOON

NAHB The New American Home[®] 2024



TNAH[®]
The New American Home @IBS

PROBUILDER
PROFESSIONAL BUILDER
THE OFFICIAL MEDIA PARTNER OF NAHB